

LATEST VERSION 20.02.2020

RYMDEN

(BUGGE WESSELTOFT/ DAN BERGLUND/ MAGNUS ÖSTRÖM)

Management: Sven Fobbe · phone +49 1782377677 · Email: sven@ohsotrue.de

Hi there. This is our Touring rider. It is an attempt to set out our requirements in order to make the artists performance possible. It is incorporated as part of the performance contract and therefore it is a legally binding document and because of this you must act on the points it lays out and the questions it raises.

If you do not notify us 4 weeks in advance, of any technical adjustments or problems with any of our requirements, we will assume you have accepted the contents of this rider in full.

Purchaser provides all the following at no costs to the artists.

STAFF REQUIREMENTS (ALL ENGLISH SPEAKING)

1 PURCHASER PERSONNEL

- a) The Purchaser shall supply **ONE (1) Representative** with decision making powers who both speaks English and is familiar with the facilities at the engagement. He/She will attend the engagement from load in to load out and will remain in the building throughout the entire day.
- b) This representative will provide the Tour Manager/ Artist at load-in time with all necessary passes to gain access to the whole of the venue, backstage, offices etc (Access All Areas) throughout the entire day. Further representative will introduce Tour Manager to any of below local crew members in a set meeting.
- c) The representative has great local knowledge of stores and contacts supplying electronical equipment (cables, adaptors), computer software and hardware.

2 VENUE CREW

- a) SUPPORT TO OPTIONAL OWN CREW ONE (1) professional high qualified Sound engineer
- b) optional: ONE (1) professional high qualified Monitor sound engineer at side stage
- c) ONE (1) professional high qualified light technician at soundcheck & performance.
- d) ONE (1) experienced stage manager
- e) FOUR (4) experienced stage hands to efficiently handle technical on stage needs
- f) ONE (1) dedicated piano tuner available at:
 - (i) TUNING after soundcheck when RYMDEN is the only act that night
 - (ii) FINE. TUNING at change over after ANY support act using the piano

3 SECURITY

- a) Purchaser undertake to arrange as a cost of the show, able, mature, intelligent, sensible and sober security staff. You undertake to ensure that your audience area staff not to be armed.
- b) All security personnel should be clearly and easily recognizable by all and that all security staff shall be unarmed and act in a professional and courteous manner and shall refrain from any excessive force.
- c) Purchaser will provide security personnel before, during and after the performance(s) to ensure the safety and privacy of Artist and their belongings. Particular emphasis shall be placed on the stage, dressing rooms and backstage area.
- d) Purchaser will be liable for any and all damage and/or theft of Artists/ Crew's personal items.
- e) In venues where Alcohol is sold, purchaser will be responsible for any and all damages to rest rooms, seats, and all other areas. ARTIST WILL NOT ACCEPT RESPONSIBILITY.

TECHNICAL REQUIREMENTS

1 SOUNDCHECK

a) Artist will be provided with a minimum of TWO (2) hours to setup and soundcheck – **PA system must be fully operational at this time** and all required Venue Crew must be on hand through-out.

CHANGE OVERS: If this time is not available due to Festival scheduling, the minimum change over time is 45 minutes.

b) The sound check shall be considered wherever possible as a closed rehearsal, no unnecessary staff shall be present and absolutely No Press or Cameras are permitted at this time.

c) Purchaser agrees not to open the Venues doors for public admittance until first obtaining consent from the artists Tour Manager

2 STAGE

a) The playing area must be a minimum of 8m wide by 5m deep. This area shall be completely flat (NO RAKE!) and level over the entire area and be free from any holes, cracks or obstructions of any description.

b) Any entrance or exit steps or stairways to or from the stage shall be equipped with safety handrails, be fitted with switchable safety lighting.

c) If you provide on-stage monitoring the desk position of the desk must be close to the playing area and give a completely free and unobstructed view for your monitor engineer. Any obstructions to his visual line of contact to the complete playing area must be removed.

d) The stage must be weatherproofed against adverse or inclement weather conditions. It must have a strong and secure roof with a guttering system to drain rainwater away from the stage.

3 SOUND (OPTIONAL ARTIST OWN SOUND TECH)

Please note: PA system & backline must be fully operational 30minutes before the artists arrival!

Artists will have full control over all elements of the production of this performance including lighting, sound, sound levels, content and creative material. Artists shall have artistic control over the choice and cueing of all the program music. To be approved by Tour Manager on location at load in.

a) Purchaser shall provide a professional high quality, 3 or 4-way sound system (pref. Meyersound, d&B). The system must be in excellent shape, capable of delivering a clean and undistorted sound (less than 2 percent total distortion at any given frequency at any given time), with uniform coverage of the entire venue, including balconies or similar seating at a sound pressure level of at least 105 dB.

b) Purchaser shall ensure that the audio system is free from electrical hum, buzzes and excessive fan or mechanical noise. Also please assist us to attempt to keep any noise from heating, air conditioning, generators etc. to a minimum.

c) MIXING POSITION: Both audio and lighting control at FOH will be as low and unobtrusive as possible, but of course have to be a certain size due to their nature. The FOH position is to be in center of the hall 2/3 from the stage front.

d) MONITORS/ FOH DESK: Artists requires a total of FOUR (4) bi amp'd, monitor wedges containing two heavy-duty 15" and one 2" horn. The system must be totally free of hum and noise. The sound engineer shall be able to connect a computer to the FOH mixer via Dante or a 8x8 usb interface.

e) ELECTRICITY: All the equipment the artists are using, is operating at 230 V / 50 cycles. If the voltage is diverging from this, we need transformers that can give us 230 V AC power. Please supply sufficient amount of power plugs as mentioned below in Backline Requirements.

4 LIGHT / VIDEOPROJECTION (OPTIONAL ARTIST OWN LIGHT TECH)

The Artists travels with own Light/ Visuals personal (OPTIONAL BY ARTISTS DECISION). If Artists does not bring own light personal the following guidelines are relevant.

a) Artists ask to have mainly delicate moodful lightning interchanging for each song. NO STROBE LIGHTNING.

b) Preferably little use of haze machines. Haze machines should not point into the direction of the artists and be placed in distance of 5 meters away from the artists individual positions.

BACKLINE REQUIREMENTS

PIANO

- 1 x ACOUSTIC CONCERT GRAND PIANO (Steinway, optional Yamaha) - Tuned in 440 Hz
- 1 x adjustable piano chair
- (piano should be less than 10 years old, clean, well maintained and in new condition!!)
- 1 x FENDER RHODES 88/73 E-piano (in very good shape, on legs)
- 1 X FENDER TWIN REVERB AMP
- 1 x SYNTHESIZER (Analog Monosynth): Minimoog OR Korg MS 20 (no MS2000)
- 1 x X-KEYBOARDSTAND
- 1 x SMALL LAMP to clip on internal music stand plate of grand piano, to read music charts (f.e. Clip On Light like on a regular Music Stand)
- 4 x MONO JACK CABLE 3,0m for internal uses
- 3 x XLR cable 3,0m for internal uses
- 6 x DISTRIBUTOR POWERPLUGS 230 V SCHUKO



(Synthesizer, Artists Laptop go into Artists Soundcard - CH 18/19)

BASS

- 1 x BASSAMPLIFIER Ampeg or Fender
- 1 x BASS CABINET: 4 x 10"
- 1 x DRUM THRONE (NO BIKE SEAT MODEL)
- 1 x CARPET (MINIMUM 2m x 1m)
- 1 x CONTACT MIC for acoustic Double Bass
- 1 x SOLID MUSIC STAND with 1 X LIGHT
- 6 x DISTRIBUTOR POWERPLUGS 230 V SCHUKO

DRUMS

Good quality drum kit, preferable maple shells. (Yamaha Maple Custom, Gretsch, Tama Star Classic or similar).

- 1 X 20" BASS DRUM (18" SECOND CHOICE)
- 1 X 14" SNARE DRUM
- 1 X 12" RACK TOM (MOUNTED ON BASS DRUM, **NOT** ON STAND)
- 1 X 14" FLOOR TOM (WITH LEGS, **NOT** ON STAND)
- 1 X 16" FLOOR TOM (WITH LEGS, **NOT** ON STAND)
- Coated heads on all drums (Remo Ambassador or similar)

Drum Hardware:

- 1 X HI-HAT STAND
- 1 X BASS DRUM PEDAL (DW PEDAL, ACCELERATOR OR SIMILAR)
- 1 X SNARE STAND (BALL ADJUSTMENT TILTER FOR PRECISE POSITIONING)
- 7 X CYMBAL STANDS (2 WITH BOOM)
- 1 X DRUM THRONE (**NO BIKE SEAT MODEL**)
- 1 X CARPET (3M X 2M)
- 1 X SMALL TABLE (CA. 30X30X40 CM) - TO PLACE OWN MIXER
- 6 x DISTRIBUTOR POWERPLUGS 230 V SCHUKO

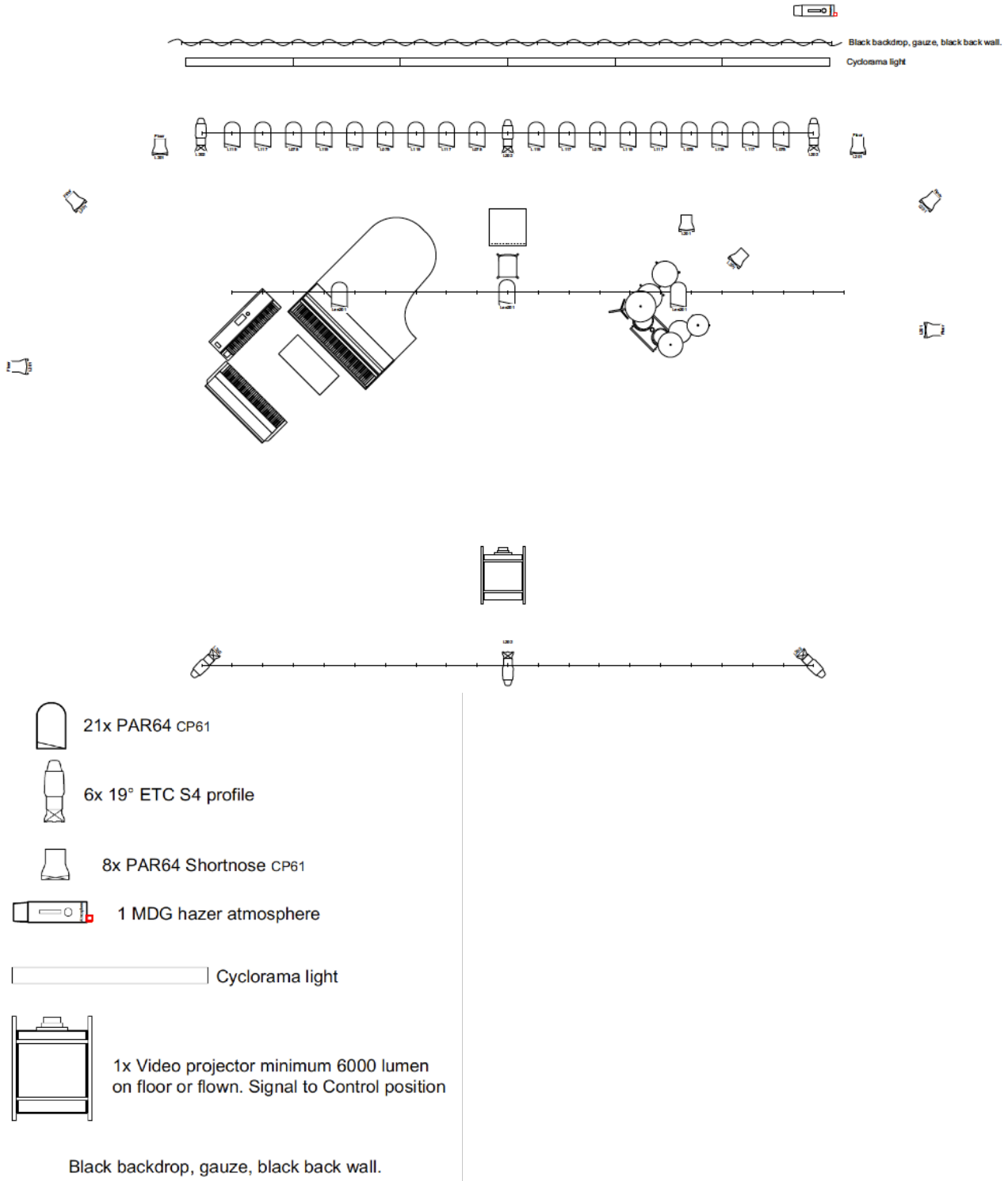
DRUMMER CANNOT SHARE DRUM KIT WITH OTHER BANDS DUE TO INTERNAL FX & MICING. BRINGS OWN MIXER AND HARDWARE EFFECTS.

DRUM SET UP CANNOT BE REMOVED AFTER Soudcheck - PLEASE USE RISER.

LIGHT

The Artists own Light personal is NOT always traveling with the group. Please consult Artist Management.

Light control position needs to be close to sound control position. We use black backdrop, gauze or black back wall. Technical set up, lay out to be discussed if venue standard light instruments exists.



DRESSING ROOM

a) The Purchaser agrees to provide for the Artist's sole use at least

(i) ONE (1) clean, private, lockable dressing room marked RYMDEN with minimum space for SIX (6) people

b) Dressing & Catering rooms must be available ONE (1) hour before soundcheck, located in the same building as the stage and accessible to the stage, without the Artist having to walk through or being viewed by the audience.

c) Rooms are of relaxed atmosphere and have adjustable soft lightning (no florescent lights). The rooms must be well lit, properly and individually heated or air-conditioned depending on the season.

d) Rooms include clean lavatories **for the artists exclusive use**, supplying hot & cold running water. With a total of THREE (3) bath-sized (pref black) towels and THREE (3) hand-sized (pref black) towels.

e) The keys of the dressing rooms must be given to the Tour Manager/ Artist upon arrival at the venue.

f) (i) Dressing room contains

- TWO (2) couches and FOUR (4) arm chairs
- ONE (1) couch table
- ONE (1) table
- ONE (1) full length mirror
- ONE (1) steam iron + ironing board in good condition
- ONE (1) empty trash can
- FIVE (5) AC power outlets (220V) for use of electronic equipment
- Papers and pencil
- Local newspapers or magazines advertising the performance

CATERING at arrival / soundcheck

Travel party does not includes people with special needs apart from organic food supplies wherever possible.

a) ONE (1) bowl of fresh mixed ORGANIC salad (mixed leaves, baby spinach, paprika, tomato, chinoa, nuts) for 2 people.

b) Handful of ORGANIC (unchopped) fruits (Apples, Grapes, Peaches, Oranges, Bananas)

c) Assorted ORGANIC high quality snacks like selection of nuts (cashews/ macadamia), vegetable chips.

d) In the dressing rooms ONE (1) drinks cooler or clean ice tray including:

- Hot water kettle to make tea, assorted selection of ORGANIC green and herbal tea.
- 6 x 1.0 liter bottles of high quality still mineral water
- 6 x small bottles of high quality still mineral water (for on stage)
- 2 x 1.0 l bottles of Juices: Orange, Grapefruit, Blackberry
- 6 bottles of high quality LOCAL beer in bottles
- 2 x 0,75l bottles of very good quality **red** wine (local high quality product appreciated)
- 2 x 0,75l bottles of very good quality **white** wine (local high quality product appreciated)

e) Sufficient glasses, cups, napkins, bottle openers (wine/beer), fresh icecubs.

DINNER

The Purchaser will provide high quality hot catering for a total of THREE (3) - FIVE (5) people dependant of the travel party (size of crew). **Please note that neither take-out or reheated ready-meals will be considered adequate or acceptable!** If so the Purchaser will be charged 25.00 Eur per musician and crew member as dinner buy out.

Dinner should ideally be served in a separate Catering Room, restaurant.

a) Purchaser will provide THREE COURS MEALS comprising a starter (vegetarian and meat option), main courses choice of fish, chicken and meat, desert.

Each course with vegetarian side orders (rice, pasta, potatoes) and a selection of 2 kinds of cooked vegetables, a dessert of fresh fruits as well as local dessert.

Side orders for a total of FOUR (4) - FIVE (5) people of fresh hot tea, coffee, milk, fruit juices, mineral water, red/white wine and beer.

b) All food must be fresh and hygienically prepared. All meals must be served on china plates, clean table linen and with metal cutlery. Please provide sufficient glasses and hot cups. All meals must be accompanied by appropriate condiments such as salt, pepper, ketchup and hot chili sauce.

d) AFTERSHOW: Please provide Tour Manager/ or Artist with a varied selection of menus from late night suppliers of quality foods such as Sushi, Thai, Indian etc. BUGGE WESSELTOFT PREFERS TO EAT AFTER THE PERFORMANCE.

e) Any pre-arranged and pre-booked dinners by the Purchaser at public restaurants requires the Artists management written approval two weeks in advance. Media people and audience should not attend dinners if elsewhere not agreed on in written form.

HOTEL & TRANSPORTATION REQUIREMENTS

1) THREE (3) - FIVE (5) non-smoking King Size/ Deluxe rooms for single occupancy in modern 5* star hotel. Booking TO incl breakfast, free Wi-Fi in all rooms.

(i) All rooms shall have windows to be opened/ or balcony (not towards streets) AND individually controlled air condition.

(ii) Early check-in and check-out where necessary (by advisement from tourmanagement).

2) **Local ground transportation** of THREE (3) - FIVE (5) people with luggage (Total of eight (8) large suitcases/ instrument cases) **AND 1 DOUBLE BASS (200X100X50 CM)**

(i) Transportation required for the duration of the engagement:

- (a) All Artists and crew transfers between airport, hotel and venue and restaurants
- (b) On day of arrival and departure to correspond with various flight times

(ii) Transportation to be operated with preferably ONE (1) decent 9-seater bus. Artists will only travel with their luggage loaded in the same car. Don't send luggage vans.

(iii) Vehicles must be driven by competent, discreet chauffeurs who have a very good knowledge of the area and locations and speak fluent English!

---- end of the rider - many thanks! ----



Sound engineer:

Rémi Bourcereau
remi.bourcereau@gmail.com
+33 6 86 97 24 25

Technical Rider – Fiche Technique

SUBJECT TO CHANGE / SOUS RESERVE DE MODIFICATIONS

THIS RIDER MADE PART OF THE ATTACHED CONTRACT. ADAPTATIONS ARE ALWAYS POSSIBLE WHEN DISCUSSED EARLIER WITH OUR TECHNICIAN.

CETTE FICHE TECHNIQUE FAIT PARTIE DU PRESENT CONTRAT. DES ADAPTATIONS SONT TOUJOURS POSSIBLES SI DISCUTEES D'AVANCE AVEC NOTRE TECHNICIEN.

RYMDEN

Technical Rider / Fiche Technique

A – PA-F.O.H

Active 4-Way system (line array) included subwoofer being able to cover the entire venue and balcony : D&B, Adamson, L-acoustics, Meyer (except Milo). No hard system (TMS 3 or old nexo for example, please). / **Système 4 voies actif avec subwoofer.** Le système sera homogène en pression et en couverture dans toute la salle. voir références ci-dessus.

FOH Desk imperatively located in the centre of the venue. Maximum distance between stage and mixing point is 25 meters (about 80') It must be equipped with individual light and comfortable chair : **YAMAHA CL series, Midas Pro, Soundcraft Vi, NO OTHER ACCEPTED.** Console éclairée et chaise confortable impérativement située au centre du système et à 25m maximum voir références ci-dessus.

If you provide analog or not total recall digital board please be aware that our channels and settings (even on outboards rack gear) can't be used by other engineer & must stay untouched between soundcheck & performance. / En cas de console analogique ou numérique sans total recall, les tranches et réglages (même ceux du rack de départ) ne doivent pas être utilisés et doivent rester inchangés entre la balance et le show.

Full control unit at the mix position included 1/3rd octave Eq and Delay per output & PA crossover. All the settings for this PA must be usable from the mixing location and delay settings must be adjusted before the balance time. / Control Unit complet à la console comprenant le filtrage du système, 1 Eq 1/3 d' octave & Delay par point de diffusion. Tous les réglages doivent être accessibles et les délais calés avant la balance.

1 x Reverb Unit : **Lexicon 960/480, Pcm 96/92/91, BricastiM7 other non accepted.** / Reverb Lexicon ou Bricasti, voir références ci-dessus.

Please provide DANTE access or a 8x8 minimum sound interface for computer (USB)

Please provide 4xAC Outlets at the EEC Standard / 220V at the house mix position. / Merci de fournir à la console façade 4 arrivées électriques 220V au standard CEE.

In case of digital mixer, please provide **Wifi access** in order to connect an Ipad controller. / En cas de console numérique, fournir une borne wifi pour contrôler la console par Ipad.

B – MONITOR SYSTEM

6 x bi-amped wedges all the same X15 HiQ L acoustics or same quality equivalent / 6 retours bi-amp identiques X15 HiQ L acoustics ou équivalents de même qualité.

OPTIONAL DEPENDING ON THE VENUE (please contact our sound engineer) :

Mix Desk 24/12 with 4 stereo Fx return and VCA groups (Midas ,Yamaha CL Series) 8 sends minimum. 8 x 1/3rd octave EQ's to be inserted on the mix masters (Klark, BSS). / Console 24/8 Aux avec 4 retours d'effets stéréo et VCA. 8 x Eq 1/3 d'octave identiques en insertion sur les Aux Master.

Paraphes:

Important: provide a good monitors engineer who can speak english. Otherwise, we need an interpreter / Fournir un bon ingénieur retour parlant anglais, sinon, fournir un interprète.

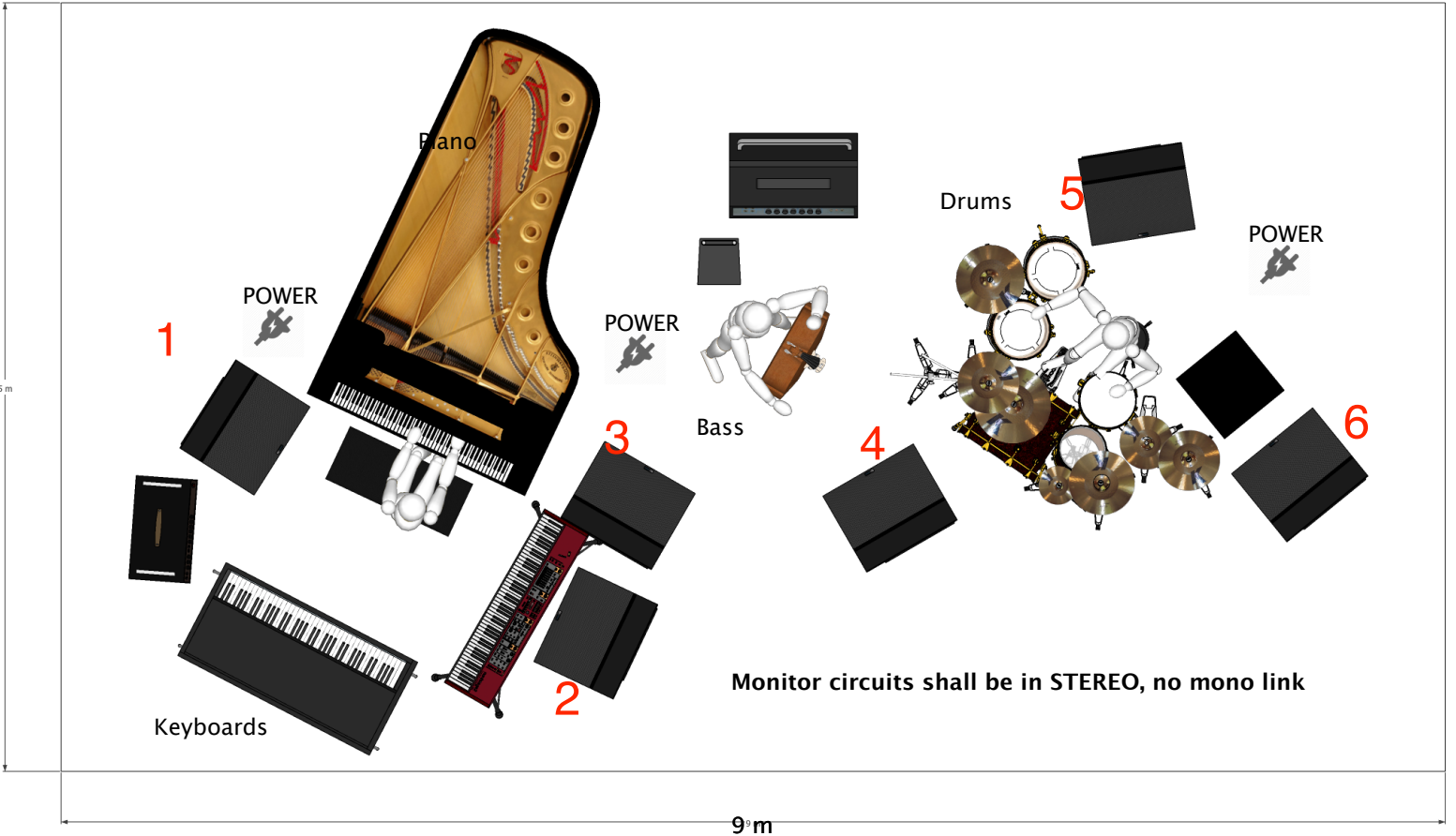
C - PATCH LIST, MICS & STANDS :

n°	Description	Mic / Alternative	Stand (black)
1	Kick Out	B52	Short Boom
2	Kick In	Beta/Sm91	
3	Snare Top	M88	Short Boom
4	Snare Btm	Sm57	Short Boom
5	HH	Sm81/ Km184	Short Boom
6	Tom H	e904	
7	Tom M	e904	
8	Tom B	MD421	Short Boom
9	Percu	Sm81 / Km184	Short Boom
10	OH L	U89/U87/Km184	Tall Boom
11	OH R	U89/U87/Km184	Tall Boom
12	Di Percu 1	Radial/Bss DI	
13	Di Percu 2 L	Radial/Bss DI	
14	DI Perdu 2 R	Radial/Bss DI	
15	DI Bass	DI (provided)	
16	Bass Mic	Schoeps Cmc6 Mk4	Short Boom
17	Piano H	Schoeps Cmc6 Mk4 / C414	Tall Boom
18	Piano Mid	Schoeps Cmc6 Mk4 / C414	Tall Boom
19	Piano Low	Schoeps Cmc6 Mk4 / C414	Tall Boom
20	Piano Pickup	YAMAHIKO +DI (provided)	
21	Piano Mon 2	Sm57	Foam in the piano
22	Sound Interface L	Radial/Bss DI	
23	Sound Interface R	Radial/Bss DI	
24	Fender Twin	M88/MD421	
25	Speak	Wireless Beta/Sm58	Short Boom
St1	DANTE 1	COMPUTER FX	
St2	DANTE 2	COMPUTER FX	
St3	DANTE 3	COMPUTER FX	
St4	LEXICON REVERB	External OUTBOARD FX	

ALL MICS must be in excellent conditions / Tous les micros doivent-êtré en excellent état.

1 SM58 on a free channel for testing and talking to musician during the soundcheck / 1 SM58 sur une tranche libre pendant la balance pour tester et parler aux musiciens.

Paraphes:



Piano & Key

Double Bass

Drums

Keyboards

Paraphes:

PIANO

SUBJECT TO CHANGE / SOUS RESERVE DE MODIFICATIONS

1 x Steinway D (optional Yamaha), optimally prepared and conditioned, 442Hz (optional 440Hz) tuned before sound check and before concert. Piano tuner shall be present at sound check / 1 Piano Steinway D / Fazioli / Yamaha / Bösendorfer, accordé à 442Hz (ou 440Hz) avant la balance et avant le concert. L'accordeur devra être présent durant la balance.

Piano and Rhodes should be on the same tuning (442 or 440hz).

1 x adjustable piano chair / Banquette de piano

Piano must be less than 10 years old, in perfect condition.

KEYBOARDS

1 x FENDER RHODES 88/73 E-piano (in very good shape, on legs)

1 x SYNTHESIZER (Analog Monosynth): Minimoog OR Korg MS 20 (no MS2000)

1 x KEYBOARDSTAND

1 x MONO JACK CABLE 3,0m for internal uses

1 x XLR cable 3,0m for internal uses

6 x DISTRIBUTOR POWERPLUGS 230 V SCHUKO

1 x Fender Twin reverb + jacks for plug Fender Rhodes

1 x Percussion tablet to be put on the left of the Piano

BASS

1 x BASS AMPLIFIER Ampeg or Eden

1 x BASS CABINET: 4 x 10"

1 x BASS CHAIR, fully adjustable in height and also the back rest (Good Examples: Mey Chair Systems) / Drum stool as an alternative.

1 x CARPET (1m x 1m)

1 x DISTRIBUTOR POWERPLUGS 230 V SCHUKO

Drums / Batterie

Drum riser ONLY when quick change over is needed (lowest possible setting) / Drum riser seulement si changement rapide de plateau (plus bas possible).

1 Good quality drum kit, preferable maple shells. (Yamaha Maple Custom, Tama Star Classic, Gretsch or similar), all drumheads with coated skins (Remo Ambassador). / 1 bonne batterie (voir références) équipée de peaux sablées Remo Ambassador.

1 Bassdrum 20" (18" second choice) Off center hole in front head (not in the middle).

1 Snare drum 14"

1 Racktom 12" (mounted on bass drum, not on a stand)

1 floor tom 14" (with legs, not on a stand)

1 floor tom 16" (with legs, not on a stand)

7 Cymbal stands (with 3 booms)

1 Hihat Stand

1 Bassdrum pedal (DW 5000 (no DW 9000) single pedal, accelerator or similar)

1 Snare stand (ball adjustment tilter for precise positioning)

1 Drum throne (no bike seat model)

1 Drum carpet 3x2m.

1 straight mic stand normal height, preferable with round foot. Used for mounting percussion

1 5 metres xlr mic cable

1 3 metres xlr mic cable

1 Distributor Powerplugs 230V V Schuko

1 table for electronics, preferable the lid of a Fender Twin hardcase or similar height and size (2nd choice piano stool)

E – Intercom / Interphonie :

Imperative between house mix, the stage and the lightdesk. / intercom face, plateau, lumières.